

**INTRODUCTION**

**FieldChart** for Windows® supports communication and management of data collected by **FieldLogger** and other devices from **NOVUS**, such as controllers and indicators.

Easy to use, no previous training is required. It transfers data to the computer, plotting on-line and recording data. It features zoom, table view, charts overlap, printing and table data export to spreadsheets or text editors. When "online" it communicates with up to 8 **FieldLogger** units or 64 controllers or indicators, thus making possible to monitor and plot up to 64 channels of analog variables. High and Low alarms can be assigned to each channel.



**SYSTEM REQUIREMENTS**

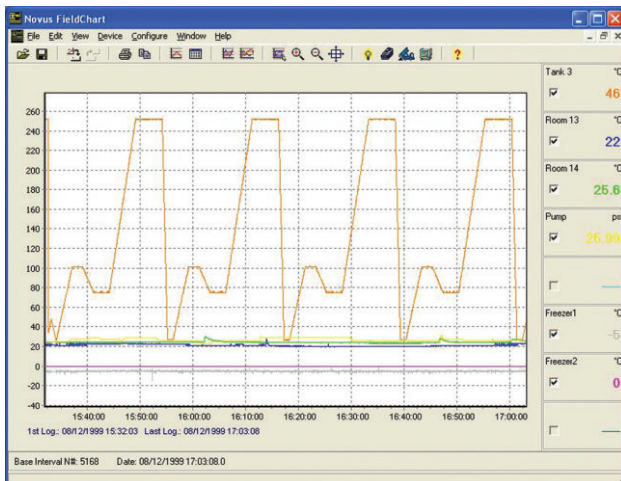


- Windows® 98SE or higher.
  - Processor: Pentium III 500MHz;
  - Free disk space: 100MB;
  - RAM: 128MB (256MB recommended);
  - Serial communication port or USB.
- Modbus RTU slave communication devices.
- RS232/RS485 or USB/RS485 converter.
- **FieldChart** registration number, associated to the serial number of a **NOVUS** device connected to the Modbus network.

**FEATURES**

- Channel data is presented as chart and digital display
- Online monitoring of data in the Modbus network.
- Up to 8 channels per chart.
- Data recorder: samples of each channel are stored in disk at programmable intervals.
- Stored data displayed as chart or data table.
- Exports stored data in XLS and TXT formats.
- 8 channels version: 1 chart display. Enables to display up to 8 channels of 1 **FieldLogger** or of 8 variables in different **NOVUS** devices.
- 64 channels version: Display up to 8 charts. Enables to display up to 8 channels of 8 **FieldLoggers** or of 64 variables in different **NOVUS** devices.
- Communication protocol: Modbus RTU Master. Enables reading operations in **NOVUS** devices connected to the Modbus network.
- Communication Interface; Single serial port, selectable from 1200 to 57600 bps.
- **FieldLogger** data download: can transfer batch of data from **FieldLogger** memory to PC files.
- Includes a menu option to start **FieldLogger** configurator software.
- Individual supervision of alarms for each monitored variable, with visual and audible warning.
- Chart handling: Zoom, merge and overlap.

**EXAMPLES OF CONFIGURATION AND MONITORING SCREENS**



Network Devices

№	Address	Device	Label
1	1	FieldLogger	FL_01
2	2	N322_RHT	N322RHT
3	3	N1100	N110
4	4	N1500	N1500
5	5	FieldLogger	FL2

Pen Configuration

Device	Name	Parameter	Tag	Unit	Dec
Pen 1	N322_RHT	N322RHT	PV	Rht	1
Pen 2	N322_RHT	N322RHT	PV	Tem	1
Pen 3	FieldLogger	FL1	Canal1		
Pen 4	FieldLogger	FL1	Canal3		
Pen 5	FieldLogger	FL1	Canal5		
Pen 6	N1100	N110	PV		
Pen 7	N1100	N110	PV		
Pen 8	N1100	N110	MV		

Constants

Constant	Value	Tag	Unit
High	100	Const. 1	
Low	0	Const. 2	

Data List

#	Date	Time	Canal 1	Const. 1	Const. 2	Alm. 1
1	18/02/2008	08:27:39.6	20	30	20	0
2	18/02/2008	08:27:43.6	20	30	20	0
3	18/02/2008	08:27:45.6	20	30	20	0
4	18/02/2008	08:27:46.6	20	30	20	0
5	18/02/2008	08:27:48.1	20	30	20	0
6	18/02/2008	08:27:50.1	20	30	20	0
7	18/02/2008	08:27:52.1	20	30	20	0
8	18/02/2008	08:27:54.1	20	30	20	0
9	18/02/2008	08:27:56.1	20	30	20	0
10	18/02/2008	08:27:58.1	20	30	20	0
11	18/02/2008	08:28:00.1	20	30	20	0
12	18/02/2008	08:28:02.1	20	30	20	0
13	18/02/2008	08:28:04.1	20	30	20	0
14	18/02/2008	08:28:06.1	20	30	20	0
15	18/02/2008	08:28:08.1	20	30	20	0
16	18/02/2008	08:28:10.1	20	30	20	0
17	18/02/2008	08:28:12.1	20	30	20	0
18	18/02/2008	08:28:14.1	20	30	20	0

Pen Configuration

Pen Enable    Color:  

Dot Line    Width: 1

Sound

Low Alarm: 0

Hi Alarm: 0

Recognize Alarms